

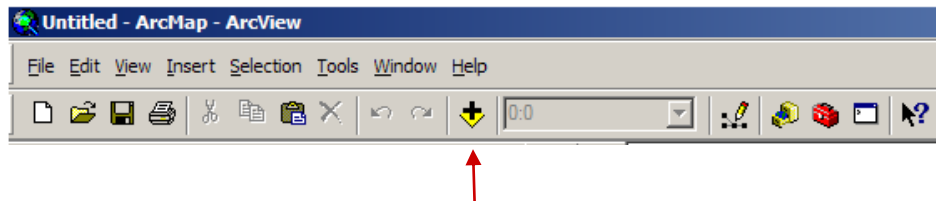
The Virtual Order Desk (VOD) is a plug-in that allows you to order imagery or LiDAR directly from your ESRI ArcMap session. This convenient method of ordering eliminates the need to visit the Imagery or LiDAR webstore(s) to order and acquire data.

To begin start ArcMap and either create a new project or open an existing project.

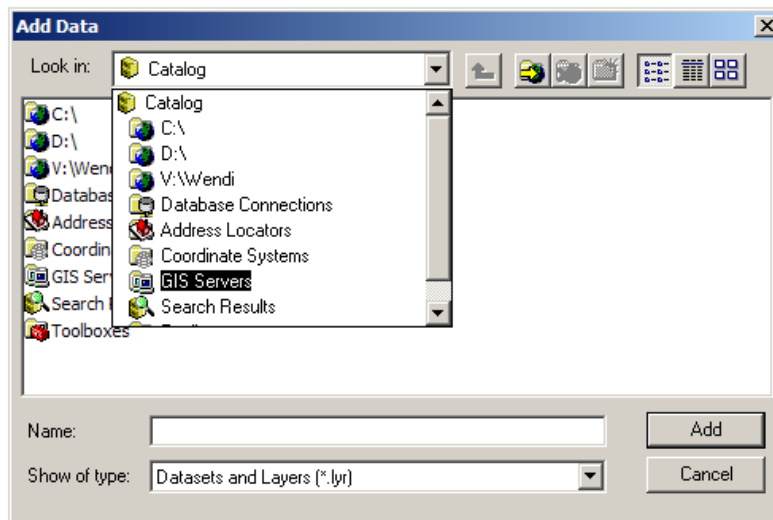
**If you are in Layout View mode, switch to Data View mode.*

Imagery Virtual Order Desk (VOD)

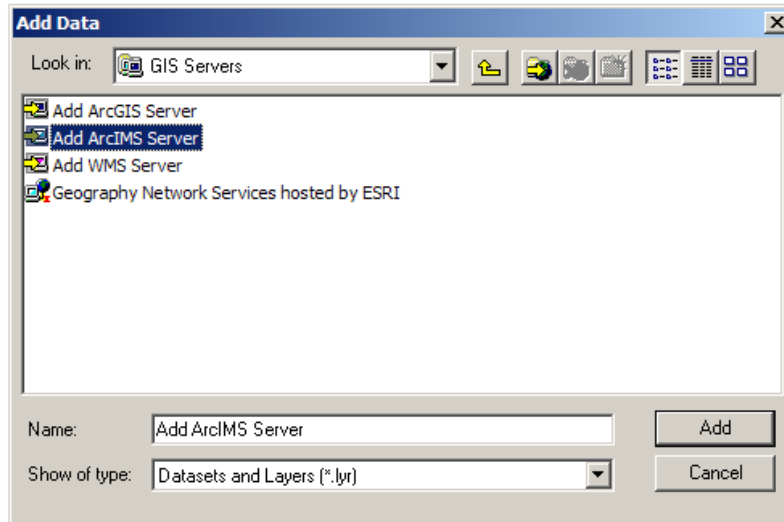
- Set the data view coordinate system (see Issues and Limitations for further details)
- If you have not already established a Valtus ArcIMS service, please follow the instructions below...
- Click the “Add Theme” button:



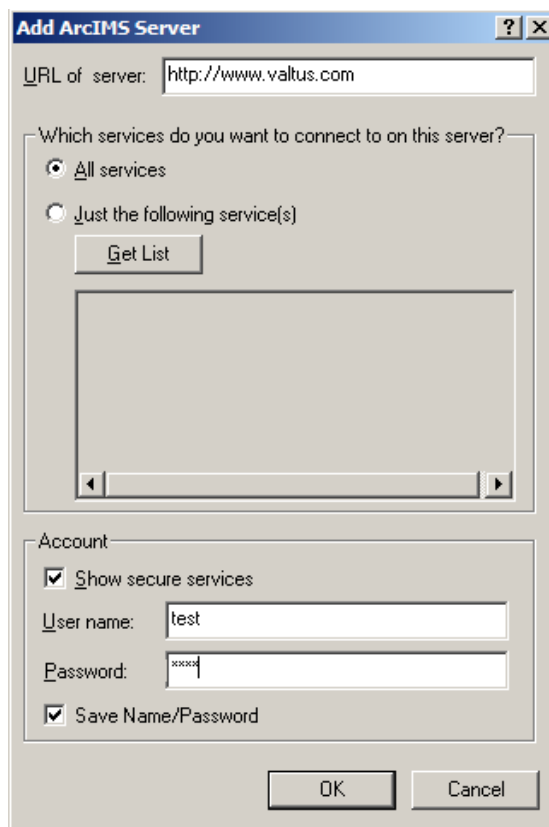
Choose “GIS Servers” from the drop down menu:



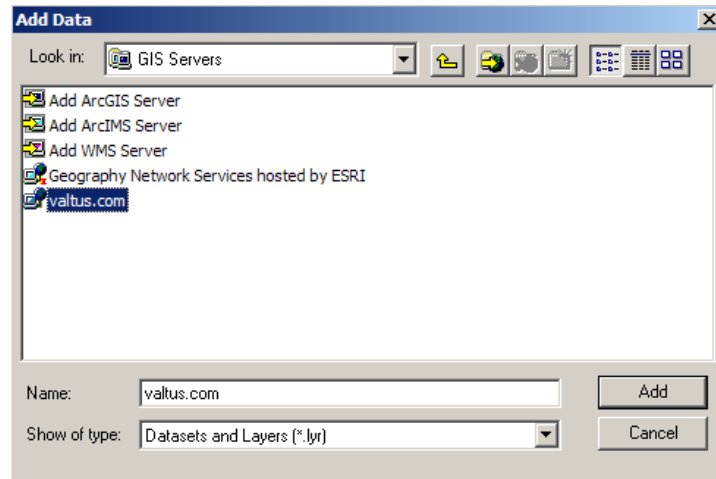
Double-click “Add ArcIMS Server”



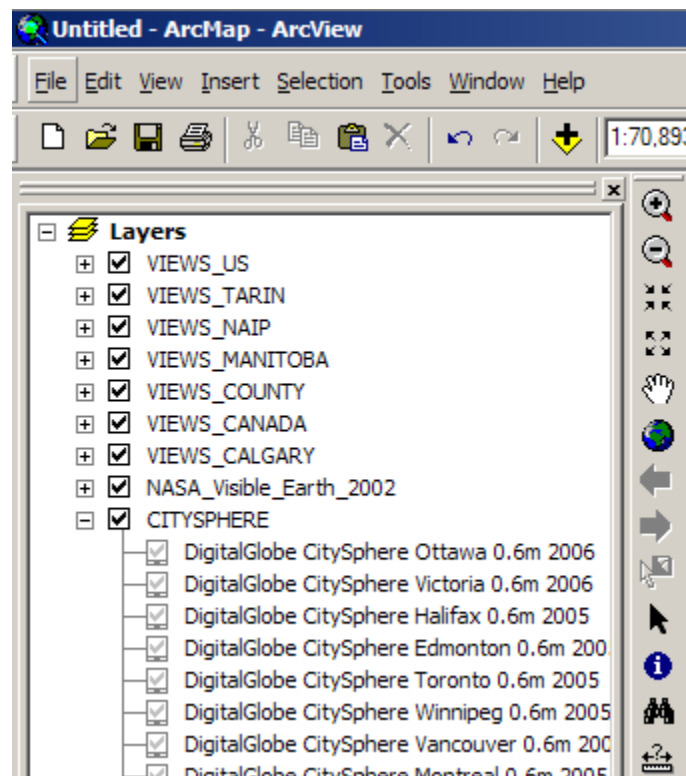
- Use <http://www.valtus.com> as the URL name.
- Select “All Services”
- Select “Show Secure Services” and fill in your login information.
- Save your name and password.



A new web service (VIEWS) is now available to you:



Select “Add.” A list of available image layers becomes available. If you choose to add all layers to your Table of Contents (TOC), you can choose between different layers and use those that best fit your requirements. Once added to the TOC, you can expand each category to see all the available imagery layers, the date collected, and resolution.



Each time you pan or zoom in the ArcMap project, VIEWS will automatically redraw the imagery using the most appropriate resolution and scale to avoid “pixelation.” If you save your ArcMap project, the imagery service will be active the next time you use ArcMap. In fact, if the imagery database is updated before you use the project again, the most up-to-date imagery will be available, as well as the imagery used previously.

Now that you have established the IMS service, under the **View** menu, submenu **Toolbars**, check the VISTA VOD tool to activate the plug-in.

Navigate to your area of interest where you wish to purchase imagery and click on the **Valtus VOD** button (Valtus globe icon).

Enter your email address and Views: Spatial Data Access Subscription account user ID and password. Select your desired output format (GeoTIFF, PNG, TIFF, PNG, JPG) and resolution (in meters). Click the **Submit** button to finalize your request.

Your order is now submitted. You will receive an order confirmation email, confirming the placement of your order. Once your order is ready for download you will receive a second email providing instruction of where/how to access your file(s).

Click on the link for your order and follow *your usual process for downloading files*.

**Make sure you save the file to your computer or network. The file will be a standard zip file, which may have a .valtus extension to get through spam protecting software. Double-click on the file to open the file and see the files and folders containing your order.*

Known Issues and Limitations with Imagery VOD

- Geographic coordinate system requests are not supported
- GeoTIFF coordinate systems supported:
 - NAD83/NAD27 UTM zones
 - NAD83/NAD27 10TM AEP Resource
 - NAD83/NAD27 3TM 111, 114, 117, 120
 - NAD83 State Plane
 - NAD27 State Plane
 - NAD83 State Plane (feet)
- Customization of the above GeoTIFF coordinate systems in ArcMAP (for example, changing CM parameter) will result in an erroneous GeoTIFF file
- PNG, TIFF and JPEG requests have more coordinate systems available
- Essentially any non-geographic coordinate system that will display a VIEWS service image should be supported
- Additional coordinate system support may be requested by contacting Valtus
- Image size is limited to 256,000,000 pixels (16,000 x 16,000 pixels) or a dimension that equals 256,000,000 pixels. Larger requests are sub-sampled
- Typical size of GeoTIFF at 256,000,000 pixels: 750 MB

For support or additional information, contact support@valtus.com

Imagery Virtual Order Desk (VOD)

Set the data view to a NAD83 UTM coordinate system

If you have not already established a Valtus ArcIMS service, please refer to the preceding instructions given under the “For Imagery VOD” section. Ensure that you have selected the LiDAR_Preview ArcIMS service.

*In defining LiDAR availability, as an optional step you may find it useful to add vector data to your map for reference.



Virtual Order Desk (VOD) For Imagery & LiDAR

Under the **View** menu, submenu **Toolbars**, check the Valtus VOD tool to activate the plug-in.

Navigate to your area of interest and then select the LiDAR_Preview service in the table of contents. Once your AOI is defined to your specifications, click on the **Valtus VOD** button (Valtus globe icon).

Next, select surface type (Bare earth or Full earth or Both), as well as your output format from the dropdown list. Enter your email address along with your Views: Spatial Data Access Subscription user ID and password. Click the **Submit** button to finalize your request.

Your order is now submitted. You will receive an order confirmation email, confirming the placement of your order. Once your order is ready for download you will receive a second email providing instructions of where/how to access your file(s).

Click on the link for your order and follow *your usual process for downloading files*.

**Make sure you save the file to your computer or network. The file will be a standard zip file. Double-click on the file to open the file and see the files and folders containing your order.*

Known Issues and Limitations with VERTEX VOD

- Projections supported for preview service viewing and product output is limited to NAD83 UTM
- Generated output product is in pre-defined 2km x 2km tiles
- A maximum of 500 tiles may be ordered per request
- Preview layers show up grey if all are turned on at the same time
- Inconsistent extent warning when adding the LiDAR Preview service to ArcMap

Should you require assistance or would like additional information, please contact us at support@valtus.com.