

### Getting Started: Using Your New Views User Accounts

This document provides step-by-step instructions on getting the most from your Valtus Views | Spatial Data Access Subscription. If at any time you have additional questions or need assistance on features not covered here, our contact information is provided in the last section.

#### Views

The following instructions describe adding Views to ESRI's ArcMap and Google's GoogleEarth. Additional applications are supported and generally follow the same steps outlined below. If you are having trouble using your Views subscription within your application, please call us; we will help walk you through the processes specific to your software.

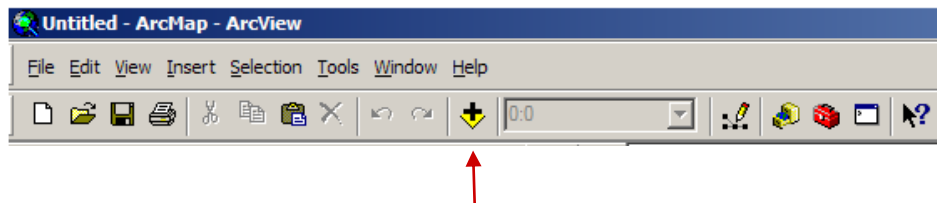
These steps only need to be completed the first time you add the Views imagery service.

#### ESRI's ArcMap

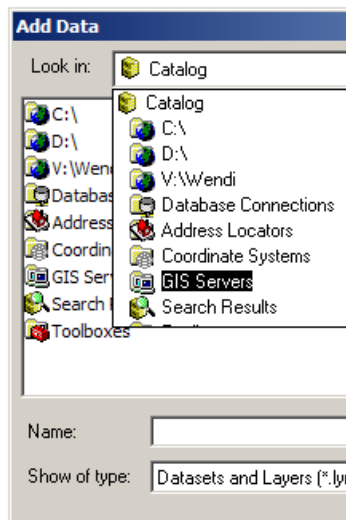
The instructions below apply to ArcMap version 9.x. Please see *Instructions for access to the Valtus VIEWS Image Web Services using ArcGIS 8.3* for use with previous versions of ArcMap.

Launch ArcMap.

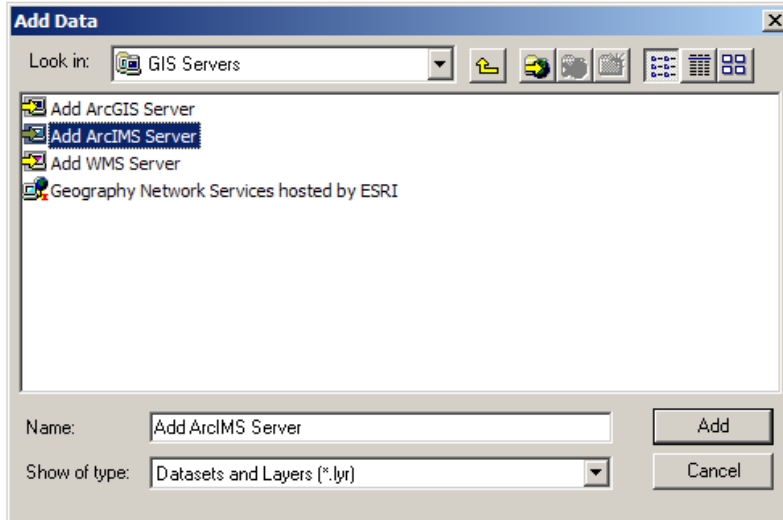
Click the "Add Theme" button:



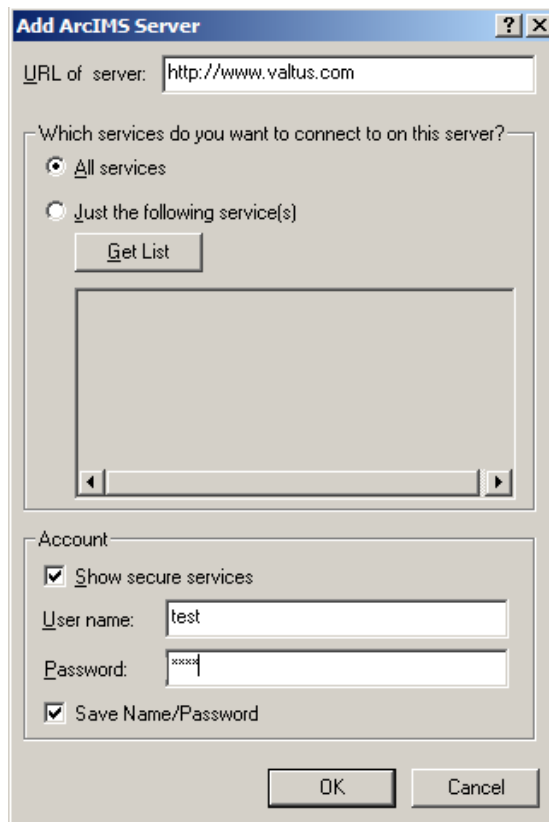
Choose "GIS Servers" from the drop down menu:



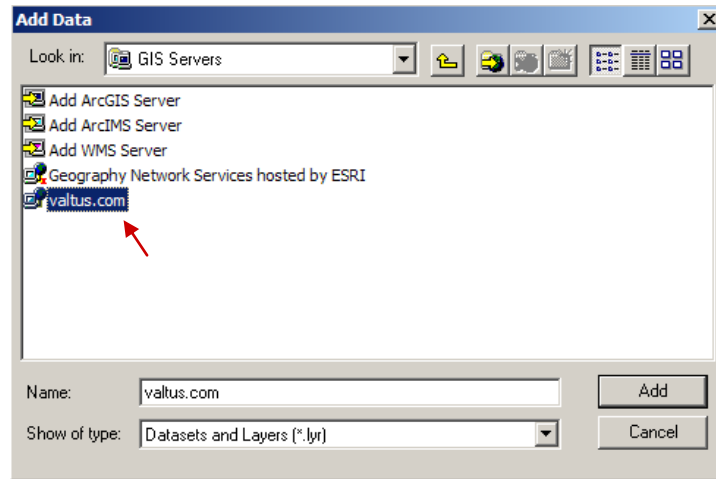
Double-click “Add ArcIMS Server”



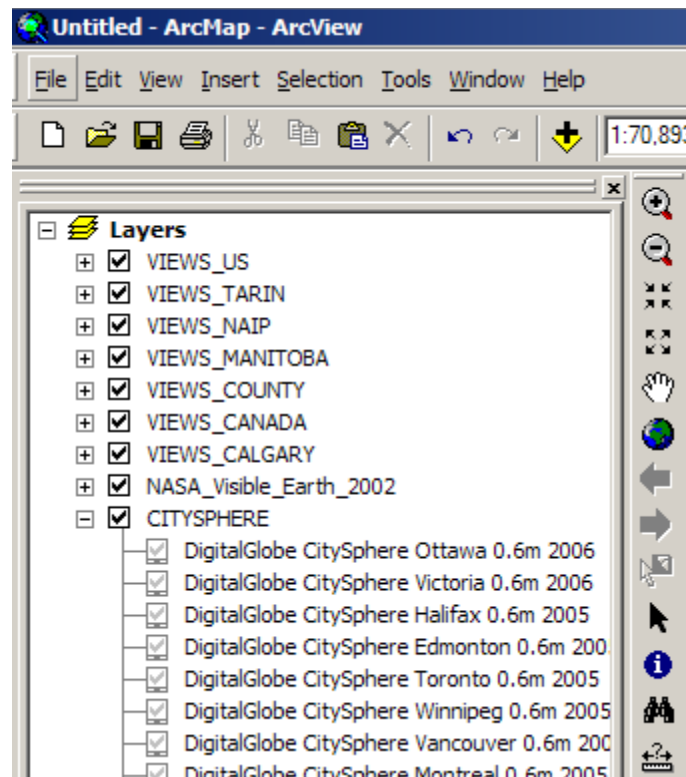
Use <http://www.valtus.com> as the URL name.  
Select “All Services”  
Select “Show Secure Services” and fill in your login information.  
Save your name and password.



A new web service (VIEWS) is now available to you:



Select “Add.” A list of available image layers becomes available. If you choose to add all layers to your Table of Contents (TOC), you can choose between different layers and use those that best fit your requirements. Once added to the TOC, you can expand each category to see all the available imagery layers, the date collected, and resolution.





## Views | Spatial Data Access Subscription Getting Started

Each time you pan or zoom in the ArcMap project, Views will automatically redraw the imagery using the most appropriate resolution and scale to avoid “pixelation.” If you save your ArcMap project, the imagery service will be active the next time you use ArcMap. In fact, if the imagery database is updated before you use the project again, the most up-to-date imagery will be available, as well as the imagery used previously.

### Google’s GoogleEarth

To use Views inside the Google Earth application, you must first download the Views\*.kmz placemark file.

Go to <http://www.valtus.ca/products/docs/Valtus.kmz> to access the placemark. Opening the link will launch Google Earth.

The Valtus Views layer will be added to your Placemarks Table of Contents.

Whenever you would like to access Valtus Content, turn this layer on by clicking the checkmark box.

Once the Google Earth image viewer is static (not in motion; panning/zooming) for four seconds, a red box will display briefly and Valtus Content will load into Google.

You will be prompted for your Views log in information the first time you activate the Views imagery. This is your standard Views log in information.