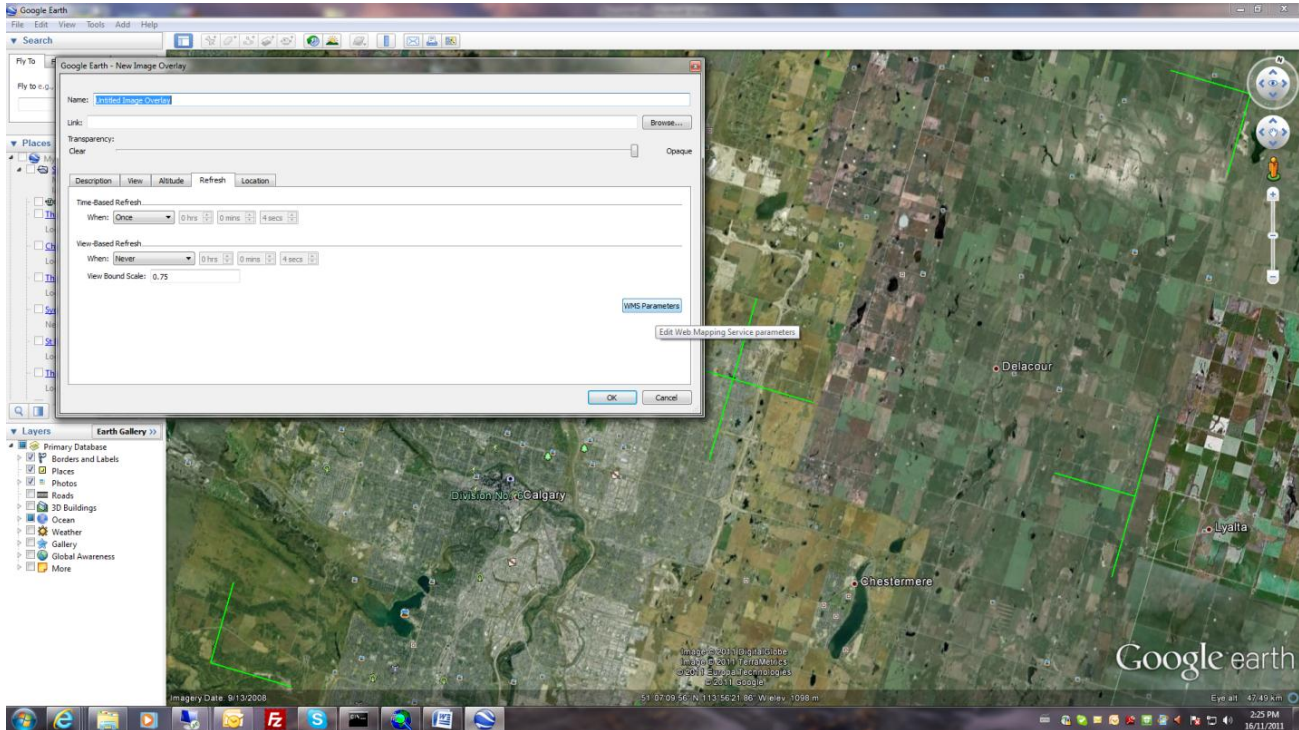
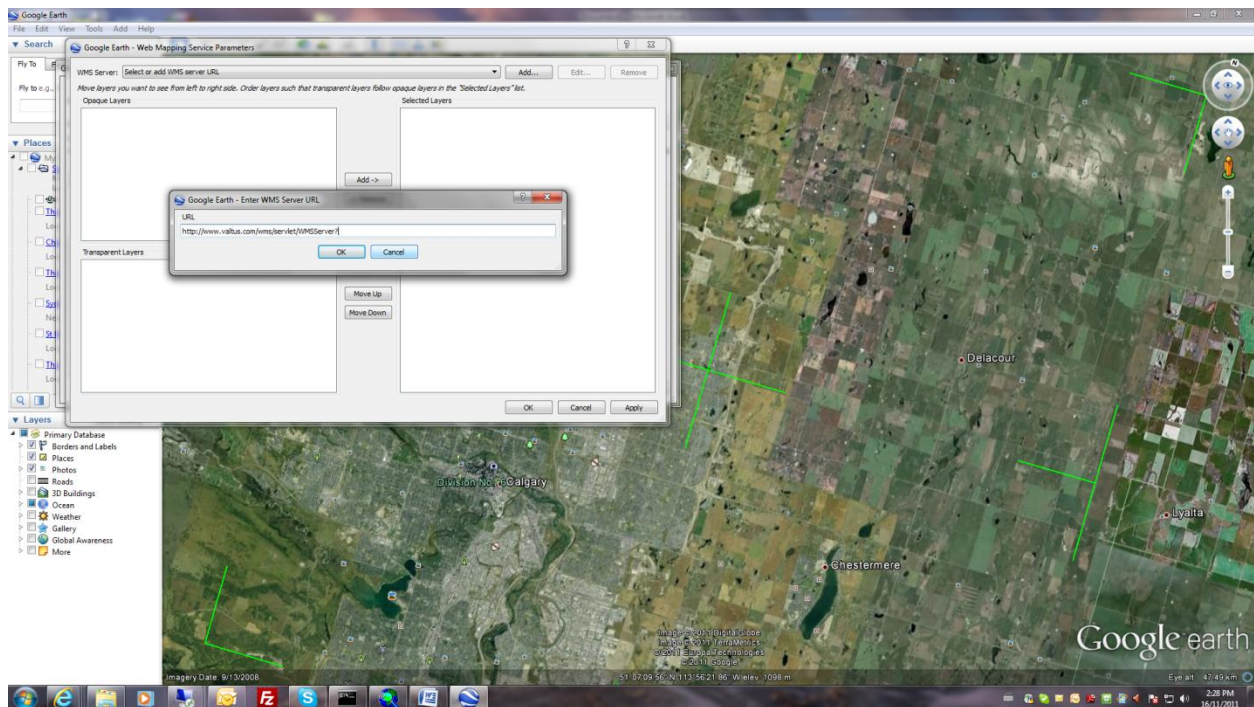


Open Google Earth, click on “Add Image Overlay” button or go to Add-> Image Overlay from the toolbar

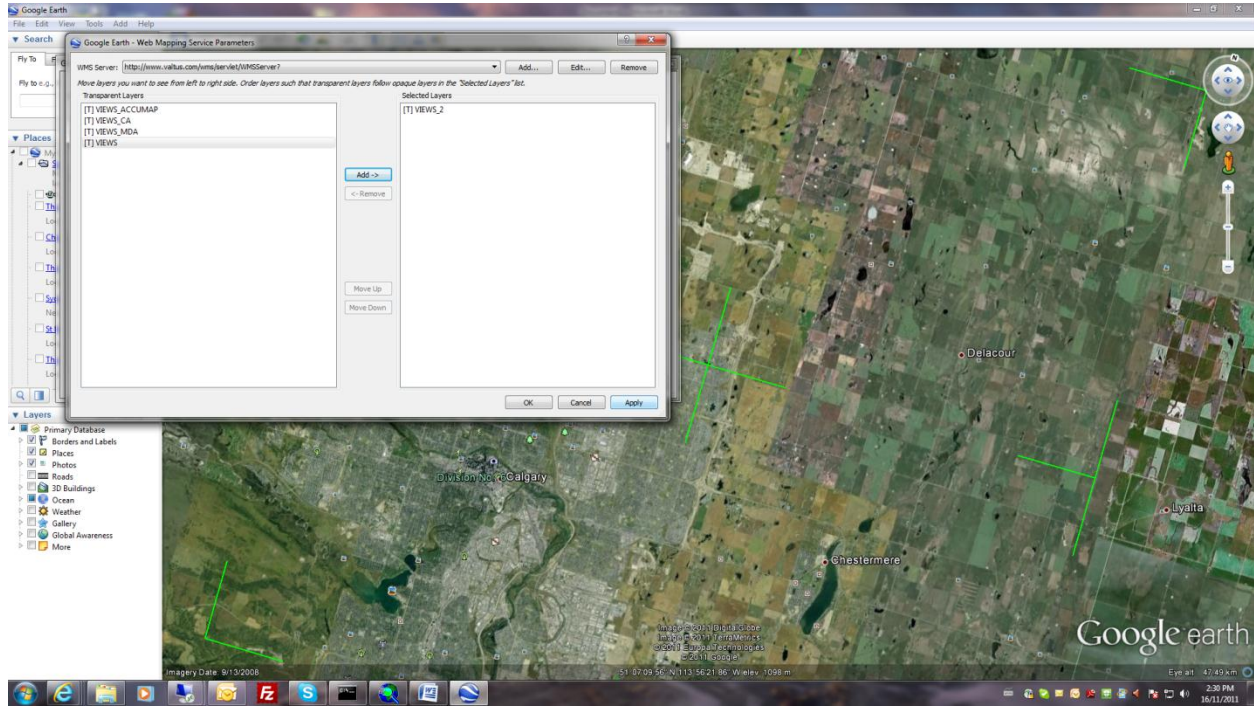
Click on the “Refresh” tab, and click on the “WMS Parameters” button



Click on the “Add” button and put in the WMS URL, after you hit OK, enter your username and password



Select the layer you would like to add, and click on OK



The Valtus layer should now be displayed

